

# 30" Under Cabinet Ventilation 500 Series - Stainless Steel DUH30252UC



## Features and Benefits

### Key Features

- 400 CFM Blower Included
- 2 Halogen Lights
- Dishwasher-safe Mesh Filters
- Ducted or Non-ducted Options

### Design

- Brushed Stainless Steel Finish
- 2 Halogen Lights

### Performance

- 400 CFM Blower Included
- Four Power Levels
- Quickly and Quietly Clears the Air of Smoke and Odor

### Convenience

- Easy to Use Rotary Controls
- Dishwasher-safe Mesh Filters
- Top or Rear Venting Options
- Ducted or Non-ducted Options

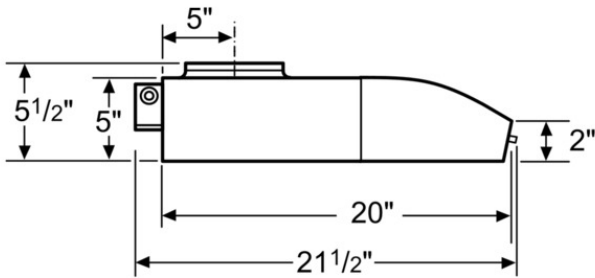
Notes: All height, width and depth dimensions are shown in inches. \*Please refer to installation instructions prior to making cutout. BSH reserves the absolute and unrestricted right to change product materials and specifications, at any time, without notice. Consult the product's installation instructions for final dimensional data and other details. Applicable product warranty can be found in a accompanying product literature or you may contact your account manager for further details.

For more information on our entire line of products, go to [boschappliances.com](http://boschappliances.com) or call 1-800-944-2904.  
Copyright ©2013 BSH Home Appliances Corporation. All rights reserved. Bosch is a registered trademark of Robert Bosch GmbH.

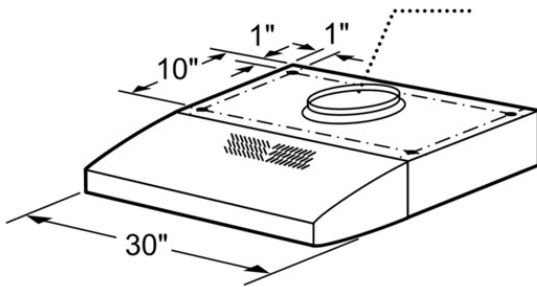
Litho Date: 04/2013



# 30" Under Cabinet Ventilation 500 Series - Stainless Steel DUH30252UC



Dimensions in inches



Measurements in inches

## Features

Operating Mode	Convertible: Ducted / Recirculating
Number of speed settings	4-stage
Delay Shut off modes	
Silence level (dBA)	
Required accessories	
Optional accessories	DHZ3002UC
Number of lights	2
Type of lamps used	Halogen
Total power of the lamps (W)	100
Grease filter material	aluminium
Grease filter type	Multilayer cassette
Clean filter reminders	

## Technical Specification

UPC code	825225846789
Material	Stainless steel
Watts (W)	
Current (A)	
Volts (V)	120
Frequency (Hz)	60
Approval certificates	CSA, UL
Power cord length (in)	
Plug type	120V-3 prong
Overall appliance dimensions (HxWxD) (in)	4 3/4" / 4 3/4" x 30" x 20"
Product packaging dimensions (HxWxD) (in)	12.99 x 23.99 x 35.99
Height of the chimney (in)	
Vertical rise height	
Required distance above cooktop/ranges	30"/30"
Net weight (lbs)	42
Gross weight (lbs)	48
Adjustable feet	
Motor location	
Maximum CFM	
Diameter of air duct (in) top	
Diameter of air duct (in) back	
Discharge direction	
No-return airflow flap	No

Notes: All height, width and depth dimensions are shown in inches. \*Please refer to installation instructions prior to making cutout. BSH reserves the absolute and unrestricted right to change product materials and specifications, at any time, without notice. Consult the product's installation instructions for final dimensional data and other details. Applicable product warranty can be found in a accompanying product literature or you may contact your account manager for further details.

For more information on our entire line of products, go to [boschappliances.com](http://boschappliances.com) or call 1-800-944-2904.  
Copyright ©2013 BSH Home Appliances Corporation. All rights reserved. Bosch is a registered trademark of Robert Bosch GmbH.

Litho Date: 04/2013

