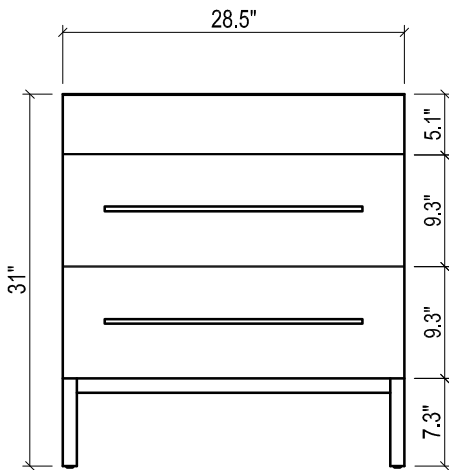
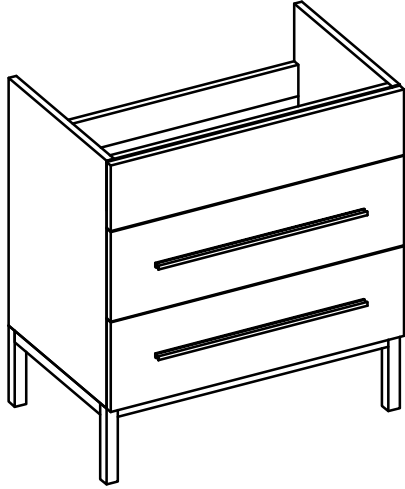
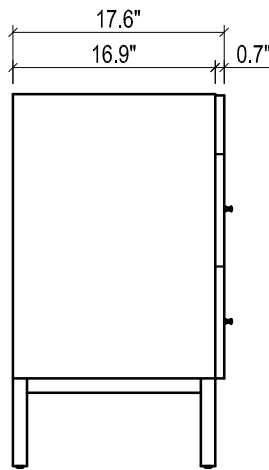


DAYTONA FOR KIRA

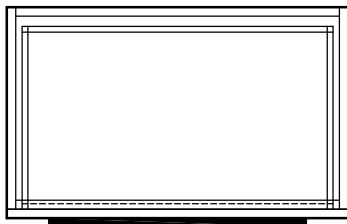
- WALL HUNG option is also available for this model.
Vanity height without legs is 23.7".
- Quality metal BLUM (or BLUM equivalent) soft-closing hinges and/or drawer hardware are included.



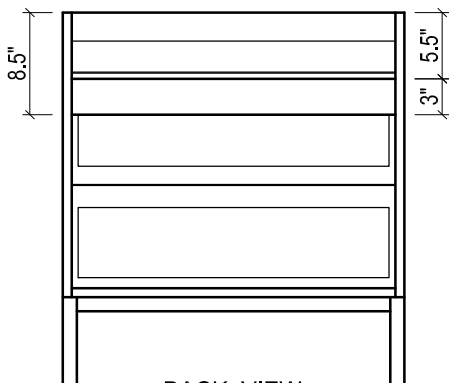
FRONT VIEW



SIDE VIEW



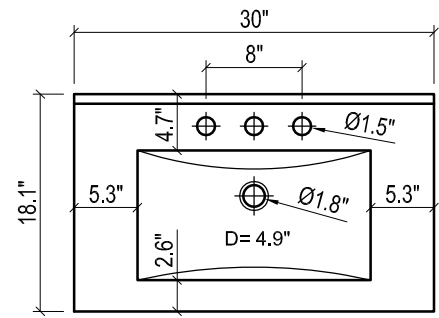
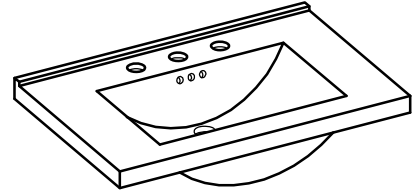
TOP VIEW



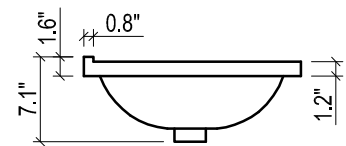
BACK VIEW

KIRA CERAMIC SINK

(available in 1 hole or 8" faucet drills)



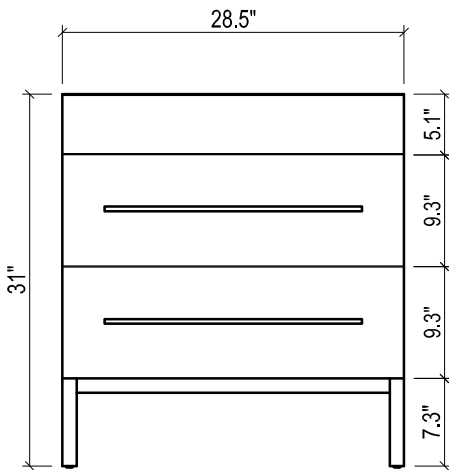
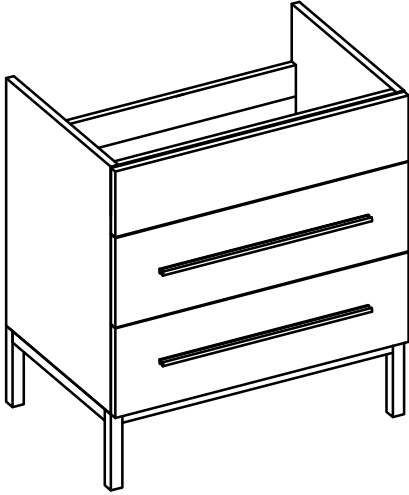
TOP VIEW



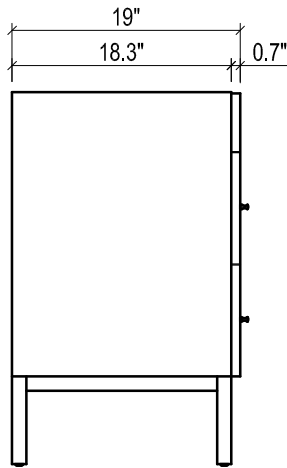
SIDE VIEW

DAYTONA FOR MILANO

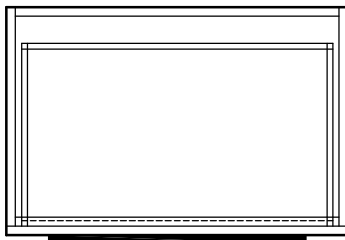
- WALL HUNG option is also available for this model.
Vanity height without legs is 23.7".
- Quality metal BLUM (or BLUM equivalent) soft-closing hinges and/or drawer hardware are included.



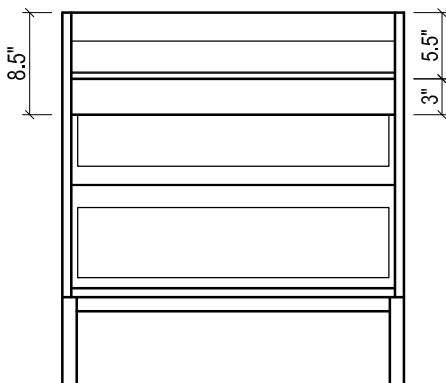
FRONT VIEW



SIDE VIEW

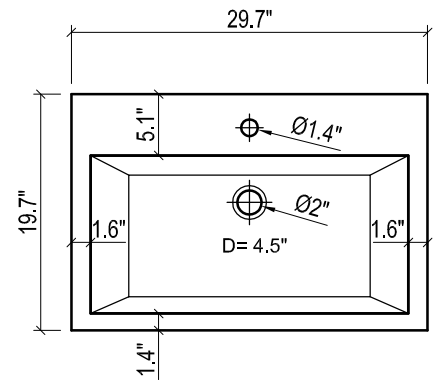
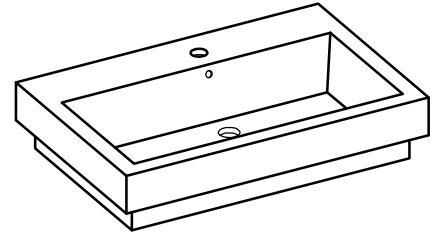


TOP VIEW

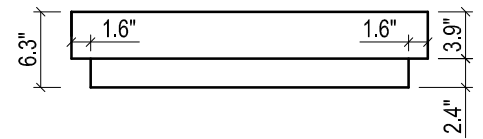


BACK VIEW

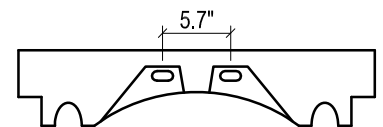
MILANO CERAMIC SINK



TOP VIEW



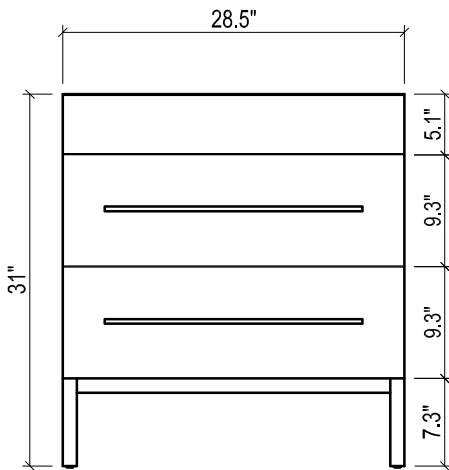
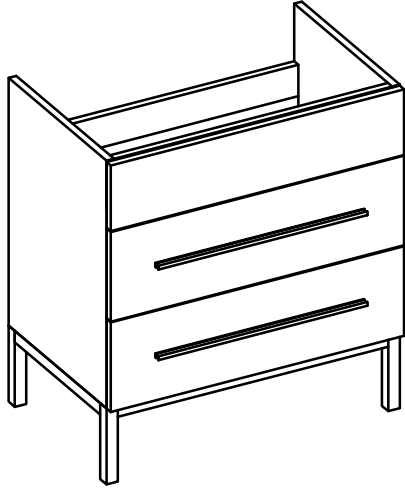
FRONT VIEW



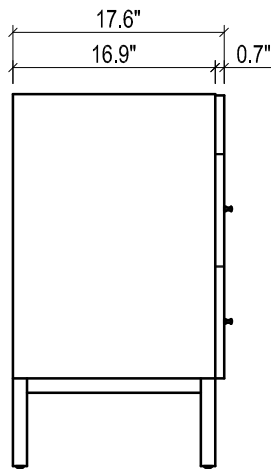
BACK VIEW

DAYTONA FOR VENICE

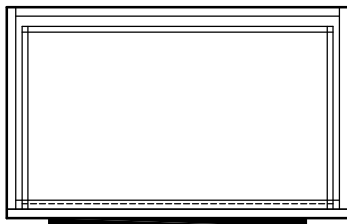
- WALL HUNG option is also available for this model.
Vanity height without legs is 23.7".
- Quality metal BLUM (or BLUM equivalent) soft-closing hinges and/or drawer hardware are included.



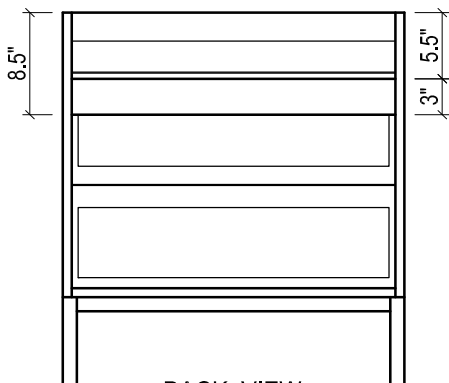
FRONT VIEW



SIDE VIEW

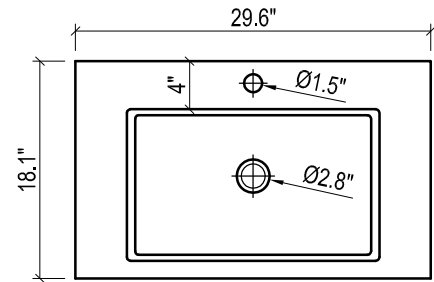
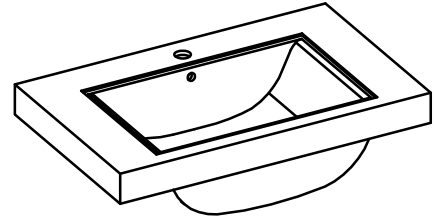


TOP VIEW

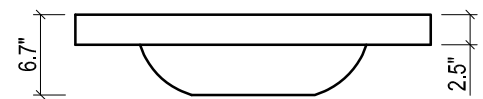


BACK VIEW

VENICE CERAMIC SINK



TOP VIEW



FRONT VIEW